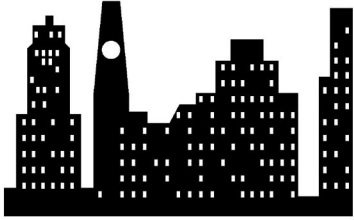
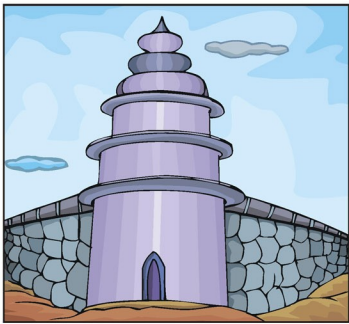


# Parts of a Cell



cells

The basic structures of all living things.



cell membrane

The thin filmlike outer layer that holds the cell together and separates it from its environment. It works like a gatekeeper allowing certain substances in and out.



cytoplasm

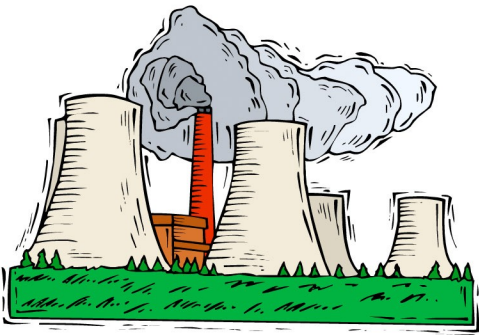
A jellylike material made mostly of water. It fills the cell, and the other parts of the cell float in it.

# Parts of a Cell



nucleus

The control center that directs all the activities of the cell.



mitochondria

They power the cell by burning fuel they get from the food we eat.



lysosomes

Protects cells by destroying harmful substances and worn-out cell parts.

# Parts of a Cell



Golgi bodies

The structure inside the cell that stores proteins and other chemicals until they are needed by the cell.



endoplasmic reticulum

Takes chemicals that were packaged by the Golgi bodies and delivers them to where they are needed. They also send waste to where it needs to go.



centrioles

Are special organelles that help cells reproduce.



©spelloutloud.com

### Terms Of Use

It makes me happy to make something that others can use. The downloads and its contents are copyright of Spell Outloud. All rights reserved.

### You can:

- \* Save the files on your computer and print off copies for your homeschool or classroom.
- \* Link directly to [www.spelloutloud.com](http://www.spelloutloud.com) to share my files with others.

### Please Don't:

- \* Host any of these files on your own site or file-sharing sites(i.e. Yahoo groups etc).
- \* Alter or sell any of the files.
- \* Sell files to make a profit (i.e. print, laminate, and sell as kits to others.)
- \* Transmit or store any resources on any other website or other form of electronic retrieval system.